



MPath Spotlights – SEG-Y Import

Importing SEG-Y data

MPath supports dozens of file formats that can be viewed, analyzed or used as inputs to basin and reservoir simulations. Most of these formats are supported natively: MPath uses the files directly, with no import step required. SEG-Y data, however, must first be processed into a volume.

To bring SEG-Y data into MPath:

1. Set your project directory to the location of your SEG-Y data. (Or create an Alias to where this data is located.) SEG-Y files are listed in the main window under SEG-Y.

2. Double click the SEG-Y file.

MPath opens the file in SEG-Y Import; SEG-Y Import displays a summary of the data, taken from the file header.

3. Verify that the Source Coordinate Byte Positions are correct. Set the Source X and Y Coordinates manually if they are not.
4. To preview the data before importing, click the Preview tab and click Update.

5. To import the data, from the File menu, choose Import.

6. Enter a File name and select a File type. MPath supports many volume formats including Gocad Voxet and EarthVision volumes.

7. Click Save to import the data.

MPath writes the volume data to the project directory.

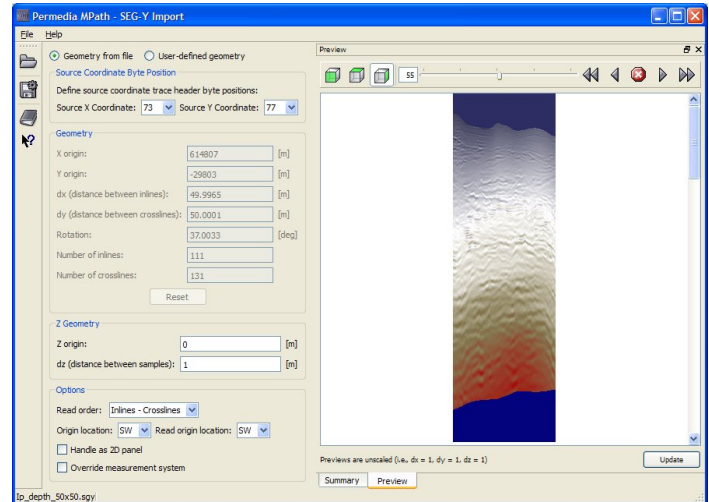
VolumeViz LDM

MPath Viewer Pro licensees can convert their SEG-Y data to a LDM (Large Data Model) format. This format is designed to efficiently display large volumes in 3D. When opened in 3D Viewer, the viewer only loads the data needed to render the scene into memory, allowing you to view enormous datasets on modest hardware.

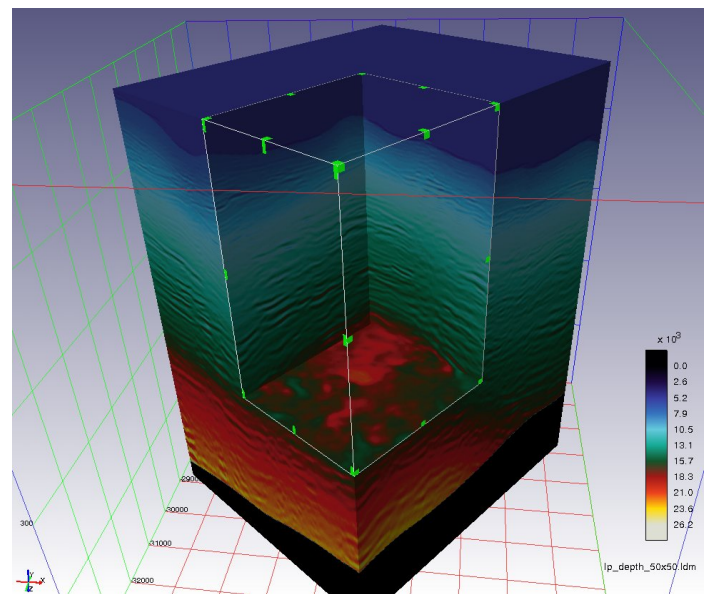
To convert SEG-Y data to LDM format, follow the steps above, but use the File>Import as LDM option.

For more information

Visit www.permedia.ca for more Spotlights, workflow documentation and tutorials. Contact support@permedia.ca for product support.



SEG-Y Import



Volume from SEG-Y in 3D Viewer, rendered as a chair cut